



## Pivot Table

|                   | S2               | S1               | Pivot            | R1               | R2               |
|-------------------|------------------|------------------|------------------|------------------|------------------|
| <b>Nifty</b>      | <b>18,169.80</b> | <b>18,242.45</b> | <b>18,284.60</b> | <b>18,357.25</b> | <b>18,399.40</b> |
| <b>Bank Nifty</b> | <b>42,617.45</b> | <b>42,974.25</b> | <b>43,178.95</b> | <b>43,535.75</b> | <b>43,740.45</b> |

Source: NSE, ISL Research

## Indian Market

|                   | Close            | % Change     |
|-------------------|------------------|--------------|
| <b>NIFTY</b>      | <b>18,265.95</b> | <b>0.27%</b> |
| <b>BANK NIFTY</b> | <b>43,331.05</b> | <b>0.31%</b> |
| <b>FINNIFTY</b>   | <b>19,337.15</b> | <b>0.32%</b> |
| <b>SENSEX</b>     | <b>61,940.20</b> | <b>0.29%</b> |
| <b>VIX</b>        | <b>13.08</b>     | <b>3.19%</b> |

Source: NSE

## Sector Index

| INDEX                      | Close            | % Change      |
|----------------------------|------------------|---------------|
| <b>NIFTY MEDIA</b>         | <b>1,716.55</b>  | <b>1.36%</b>  |
| <b>NIFTY REALTY</b>        | <b>452.35</b>    | <b>0.86%</b>  |
| <b>NIFTY OIL &amp; GAS</b> | <b>7,634.55</b>  | <b>0.80%</b>  |
| <b>NIFTY PSU BANK</b>      | <b>3,959.30</b>  | <b>-1.06%</b> |
| <b>NIFTY METAL</b>         | <b>5,822.10</b>  | <b>-0.93%</b> |
| <b>NIFTY IT</b>            | <b>28,091.75</b> | <b>-0.12%</b> |

Source: NSE

## Institutional Activity

| Category       | Buy Value       | Sell Value      | Net Value       |
|----------------|-----------------|-----------------|-----------------|
| <b>DII</b>     | <b>5,061.73</b> | <b>5,851.40</b> | <b>-789.67</b>  |
| <b>FII/FPI</b> | <b>8,094.74</b> | <b>6,261.61</b> | <b>1,833.13</b> |

Source: NSE

## Market Turnover

| Products      | Value (Rs. In Crores) |
|---------------|-----------------------|
| Equities      | 51815.19              |
| Index Futures | 26338.33              |
| Index Options | 65793.26              |
| Stock Futures | 46750.52              |
| Stock Options | 3019.08               |

Source: NSE • Created with Datawrapper

## Market Overview

- Nifty50 ended higher around 18,315 levels indicating a choppy market. Nifty Midcap100 and Nifty Smallcap100 ended higher by 0.05% and 0.14% respectively.
- India VIX ended higher by 3.19% gaining 0.41 points to close at 13.08;**
- Advance-Dcline Ratio** on NSE ended at 1.32 indicating more number of companies advanced as against declining.
- Sectorally: Nifty FMCG and Nifty Energy saw positive momentum today, and the rest of the indices showed positive momentum.
- Total Equities traded value increased to Rs. 51,815.19\* vs. Rs.62,994.57 crores in the previous trading session.
- Derivative to Cash Ratio stood at 2.73\*** indicating a higher amount of trades taken in derivatives (including Options and Futures) as against the cash market.

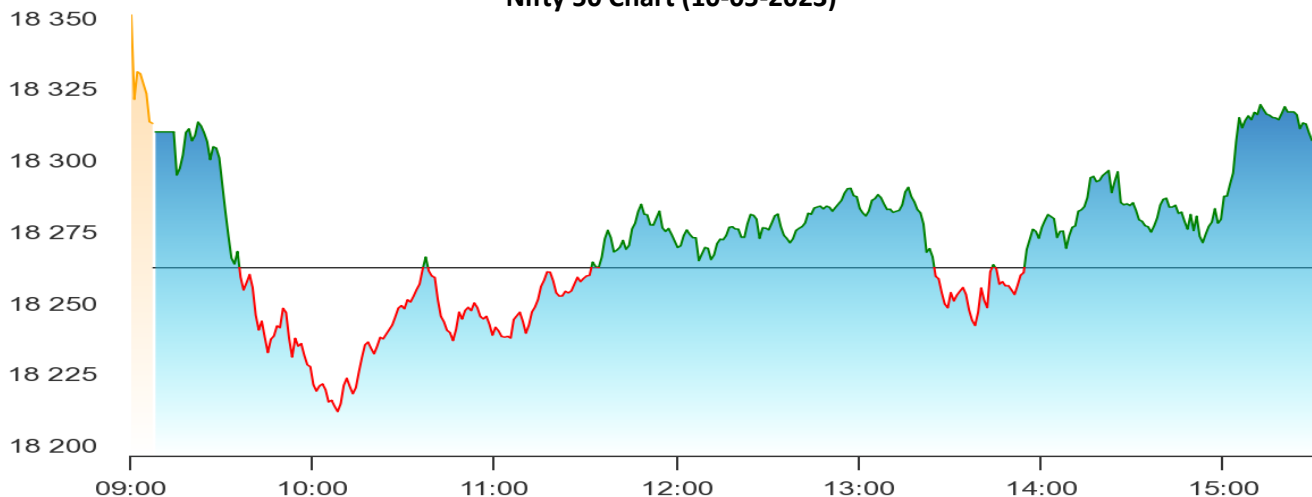
Source: NSE, BSE, RBI \*Provisional Data

## Market Outlook

- Nifty ended higher above 18300 levels opening room for 18400 levels. The market is to remain volatile tomorrow amid US inflation data and political meetings over fiscal measures.
- Bank Nifty ended higher today, the resistance could be seen at 43,700 levels.
- Initiate fresh buying in Nifty above 18,325 levels.
- VBL could be a stock to look out for. Stock has broke above its critical moving averages.
- Gas companies like IGL, and MGL stocks to watch out for tomorrow.

## Money Market Trends (As on previous working day)

| UNDERLYING                                    | YIELD          |
|---|----------------|
| 7.26% GS 2033 (10-Year Government Securities) | <b>7.0456%</b> |
| 7.06% GS 2028 (5-Year Government Securities)  | <b>6.9828%</b> |
| 91 day T-Bills                                | <b>6.8984%</b> |
| 182 day T-Bills                               | <b>6.9889%</b> |
| 364 day T-Bills                               | <b>6.9955%</b> |


**Nifty 50 Chart (10-05-2023)**

**TOP GAINERS**

| SYMBOL     | LTP    | %DIFF | VOLUME      |
|------------|--------|-------|-------------|
| INDUSINDBK | 1172.2 | 2.77  | 64,66,598   |
| HDFCLIFE   | 562    | 1.80  | 31,91,516   |
| POWERGRID  | 247.45 | 1.66  | 72,67,057   |
| TATAMOTORS | 510.05 | 1.27  | 1,24,81,404 |
| BPCL       | 371.7  | 1.27  | 27,80,978   |

Source: NSE

**TOP LOSERS**

| SYMBOL    | LTP    | %DIFF | VOLUME    |
|-----------|--------|-------|-----------|
| UPL       | 680.5  | -2.00 | 58,03,203 |
| DRREDDY   | 4869   | -1.30 | 4,54,301  |
| INFY      | 1264   | -0.53 | 65,15,734 |
| HINDALCO  | 438.05 | -0.52 | 30,75,599 |
| SUNPHARMA | 954    | -0.36 | 21,80,917 |

Source: NSE

**Currency Spot Rates** As on 1.30 PM of 10/05/2023

| Currency | Unit  | Value      |
|----------|-------|------------|
| USD      | \$1   | ₹ 82.0240  |
| GBP      | £ 1   | ₹ 103.5613 |
| EURO     | € 1   | ₹ 90.0088  |
| YEN      | ¥ 100 | ₹ 60.5900  |

Source: RBI

**Commodity Spot Rates** As on 04.30 PM of 10/05/2023

| SYMBOL      | Unit     | Spot Price |
|-------------|----------|------------|
| Brent Crude | 1 Barrel | ₹ 6,262    |
| Gold        | 10 Gram  | ₹ 61,246   |
| Silver      | 1 Kg     | ₹ 76,170   |
| Copper      | 1 Kg     | ₹ 746      |

Source: NSE

THIS REPORT IS PREPARED AND COMPLIED BY:

**JAY PATEL**

Senior Research Analyst

Email: [jaypatel@investmentoronline.com](mailto:jaypatel@investmentoronline.com)[CLICK HERE FOR RESEARCH DISCLAIMER](#)