


STOCK OF THE DAY

Stock	Last Closing Price	% Change	S2	S1	Time Frame	R1	R2	Outlook
BSE INDIA Limited	586.05	3.30%	568.42	576.82	Intraday	590.42	598.82	Positive

Indian Market

	Close	% Change
NIFTY	18,608.00	0.60%
BANK NIFTY	43,946.55	0.54%
FINNIFTY	19,409.85	0.50%
SENSEX	62,533.30	0.65%
VIX	12.88	-3.27%

Source: NSE,BSE

Market Overview

- Nifty50 Index gains more than 110 points on easing CPI inflation data in today's session ending at 18,608. Broader indices including with Nifty Midcap50 and Nifty Smallcap50 rose by 0.40% and 0.01%
- India VIX fell 3.27% by 0.44 points to close at 12.88.
- Advance-Decline Ratio on Nifty 50 ended at 2.12 on intraday basis indicating more number of companies advanced as against advancing. Overall out of Nifty50 companies 34 –Advanced, 16-Declined and 0- Remain Unchanged.
- Sectorally, Banks primarily PSU Banks touched an all-time high levels rising 3.81% in today's session indicating high money inflows while IT index ended higher by 1.12%.
- Currently, Indian Rupee is trading at \$82.7154 against Dollar. While Brent crude is trading at \$78.72 per barrel. Spot market price for Commodities like Gold and silver is at ₹53,785 (per 10 gm) and ₹66,986 (per kg).
- Currently, 7.26% GS 2032 (10 Year G-Sec) yielding at 7.2938% while 7.38% GS 2027 (5 Year G-sec) yielding at 7.1690%

World Markets

INDEX	Close	% Change
NIFTY AUTO	12,931.00	0.44%
NIFTY FMCG	46,145.55	-0.15%
NIFTY IT	29,376.55	1.12%
NFTY METAL	6,722.00	0.21%
NIFTY PHARMA	12,797.75	0.31%
NIFTY REALTY	446.00	-0.80%

Source: NSE

Source: NSE, BSE, RBI, MCX

Institutional Activity

Category	Buy Value	Sell Value	Net Value
FII	9675.09	9055.17	619.92
DII	4933.37	4896.62	36.75

Source: NSE

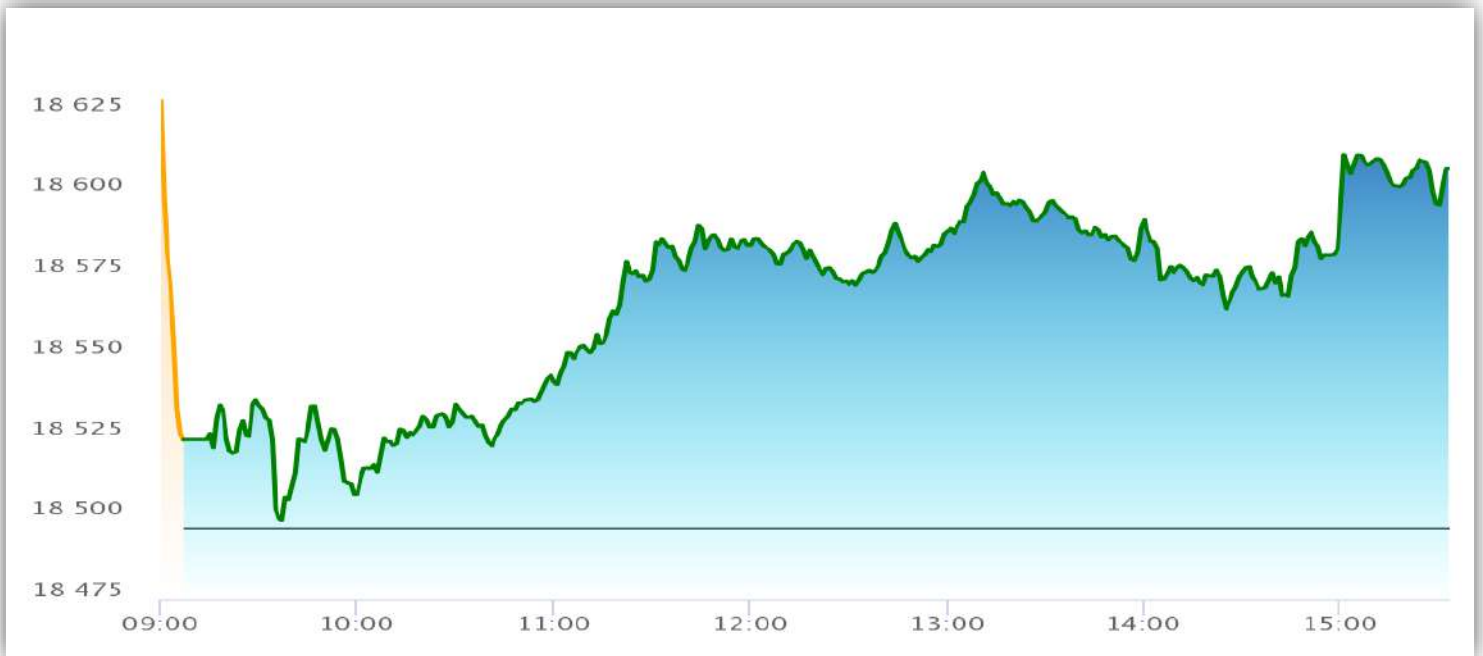
Market Outlook

- CPI inflation eased to 11 month low of 5.88% in November.
- Low inflation data cheers market and market may possibly touch all time high.
- Watch out for US Fed Meeting scheduled from 13-15 Dec.

Pivot Table

	S2	S1	Close	R1	R2
Nifty	18,355.25	18,423.37	18,608.00	18,721.16	18,882.71
Bank Nifty	43,484.96	43,795.05	43,946.55	43,386.54	44,500.50

Source: ISL Research


Nifty50 Chart (13-12-2022)

THIS REPORT IS PREPARED AND COMPLIED BY:
JAY PATEL

Sr. Research Analyst

jaypatel@investmentoronline.com

+9179-6915-3607

[CLICK HERE](#) FOR RESEARCH DISCLAIMER