



Pivot Table

	S2	S1	Pivot	R1	R2
Nifty	23,208.29	23,322.75	23,387.47	23,501.93	23,566.65
Bank Nifty	52,224.75	52,671.25	52,917.85	53,364.35	53,610.95

Source: NSE , ISL Research

Indian Market

	Close	%Change
NIFTY	23,437.20	0.47
BANK NIFTY	53,117.75	1.41
FINNIFTY	25,492.10	0.84
SENSEX	77,044.29	0.40
VIX	15.86	1.61

Source: NSE

Sector Index

	Close	%Change
NIFTY PSU BANK	6,417.05	2.37
NIFTY MEDIA	1,577.60	1.88
NIFTY PRIVATE BANK	26,556.60	1.74
NIFTY OIL & GAS	10,562.05	1.33
NIFTY FINANCIAL SER.	27,254.45	0.91
NIFTY FMCG	56,345.60	0.80

Source: NSE

Institutional Activity Yesterday

Category	Buy Value	Sell Value	Net Value
DII	11,259.51	13,211.11	-1,951.60
FII / FPI	25,103.46	19,037.68	6,065.78

Source: NSE

Market Overview

- Nifty closed at the day's high again, which is a good sign. Until it breaks the previous day's low, the direction remains bullish.
- India VIX ended lower by 1.61% losing points 0.26 to close at 15.86
- Advance-Decline Ratio on NSE ended at 2.45 indicating more number of companies Advanced as against decline.
- Total Equities traded value decreased to Rs. 92,099.85* vs. Rs.1,01,467.60* Crores in the previous trading session.
- Derivative to Cash Ratio stood at 1.98* indicating a higher amount of trades taken in derivatives (including Options and Futures) as against the cash market. Source: NSE, BSE, RBI *Provisional Data

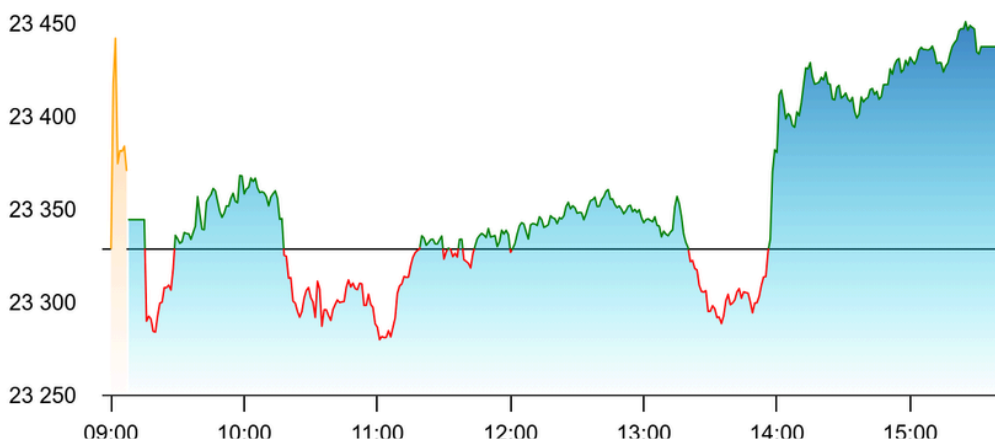
Market Outlook

- Nifty closed at the day's high again, which is a good sign. Until it breaks the previous day's low, the direction remains bullish.
- Bank Nifty is now just 2% away from its all-time high and today it broke the 53,000 resistance zone.
- Anupam Rasayan gave a good breakout today. Keep an eye on it—above 800, strong momentum is expected.
- The finance and banking sectors remain bullish, while the auto sector appears to be the weakest.



Market Turnover

Products	Value (Rs.in Cr)
Equities	91,833.93
Index Futures	26,714.29
Stock Futures	1,02,027.76
Index Options	45,883.26
Stock Options	7,464.58



Top Gainers

SYMBOL	LTP	CHNG	CHNG%
SOMATEX	48.24	8.04	20.00
SECMARK	103.58	17.26	20.00
ADL	104.53	17.42	20.00
ROML	54.16	9.02	19.98
MANAKALUCO	27.02	4.50	19.98

Source: NSE

Top Losers

SYMBOL	LTP	CHNG	CHNG%
BTML-RE1	0.30	-0.20	-40.00
JTLIND	67.60	-13.28	-16.42
IITL	208.79	-23.20	-10.00
RAJTV	58.32	-6.48	-10.00
EASEMYTRIP	12.28	-1.05	-7.88

Source: NSE

Currency Spot Rates

As on 1:30 PM at 07/04/2025

Currency	Unit	Value
USD	\$ 1	₹ 85.6464
YEN	¥ 100	₹ 60.1800
GBP	£ 1	₹ 113.6625
EURO	€ 1	₹ 97.3668

Source: NSE

Commodity Spot Rates

As on 4:30 PM at 07/04/2025

Currency	Unit	Value
Brent Crude	1 Barrel	₹5,255
Gold	10 Gram	₹94,350
Silver	1 Kg	₹95,285
Copper	1 Kg	₹835

Source: NSE

THIS REPORT IS PREPARED AND COMPLIED BY:

Investmentor Securities Team
Research Analyst Reg No : INH000010742
Email: rupam@investmentor.in

[CLICK HERE](#) for RESEARCH DISCLAIMER

