



Pivot Table

	S2	S1	Pivot	R1	R2
Nifty	24,897.33	24,958.57	25,014.28	25,075.52	25,131.23
Bank Nifty	55,066.03	55,210.47	55,314.68	55,459.12	55,563.33

Source: NSE , ISL Research

Indian Market

	Close	%Change
NIFTY	25,019.80	-0.17
BANK NIFTY	55,354.90	0.00
FINNIFTY	26,474.60	-0.03
SENSEX	82,330.59	0.24
VIX	0.24	2.03

Source: NSE

Sector Index

	Close	%Change
NIFTY REALTY	912.55	1.63
NIFTY MEDIA	1,681.45	1.11
NIFTY CONSUMER	38,478.40	0.63
NIFTY IT	37,972.35	-0.84
NIFTY HEALTHCARE	14,072.35	-0.30
NIFTY METAL	9,201.85	-0.09

Source: NSE

Previousday Institutional Activity

Category	Buy Value	Sell Value	Net Value
DII	14,749.54	16,418.01	-1,668.47
FII / FPI	21,412.00	16,019.06	5,392.94

Source: NSE

Market Overview

- After such a strong upside move, the market is likely to trade within a range and consolidate over the next few weeks.
- India VIX ended lower by 2.03% losing points 0.34 to close at 16.55
- Advance-Decline Ratio on NSE ended at 2.16 indicating more number of companies Advanced as against Decline.
- Total Equities traded value Increased to Rs. 1,49,817.59* vs. Rs. 1,27,648.75* Crores in the previous trading session.
- Derivative to Cash Ratio stood at 1.08* indicating a higher amount of trades taken in derivatives (including Options and Futures) as against the cash market.

Source: NSE, BSE, RBI

*Provisional Data

Market Outlook

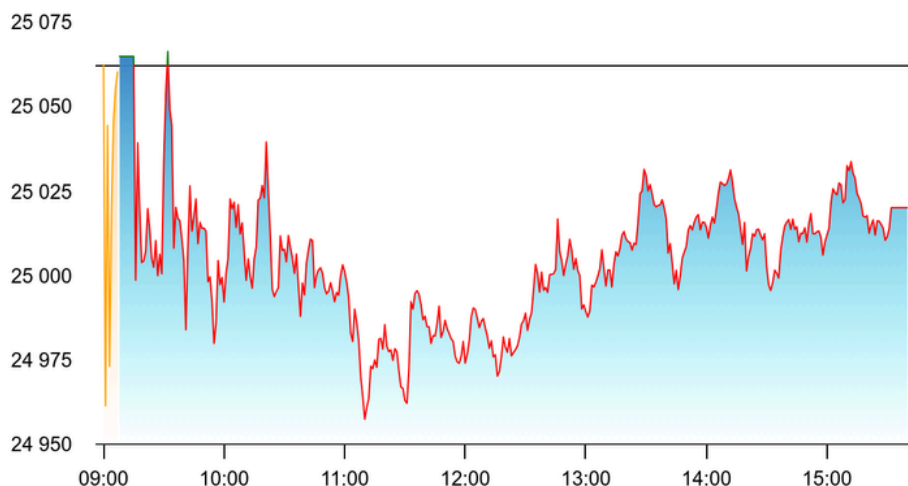
- After such a strong upside move, the market is likely to trade within a range and consolidate over the next few weeks.
- Bank Nifty is still trading around its pivot point. Any daily close above 56,000 may trigger further upside.
- Geship stock has given a good breakout on the weekly timeframe — keep an eye on it.
- Sector-wise, the media sector has shown the best performance. There are high chances of a reversal in this sector.



Date: 16 May 2025

Market Turnover

Products	Value (Rs.in Cr)
Equities	1,49,535.32
Index Futures	20,163.08
Stock Futures	94,687.69
Index Options	37,439.33
Stock Options	10,017.94



Top Gainers

SYMBOL	LTP	CHNG	CHNG%
NUCLEUS	1,186.25	197.70	20.00
PARAS	1,817.40	302.90	20.00
PKTEA	785.60	130.90	19.99
ZEELEARN	7.87	1.31	19.97
ONWARDTEC	312.10	46.30	17.42

Source: NSE

Top Losers

SYMBOL	LTP	CHNG	CHNG%
LLOYDS-RE1	15.50	-2.51	-13.94
DDEVPLSTIK	275.50	-36.95	-11.83
AJAXENGG	670.05	-72.25	-9.73
KHAITANLTD	106.76	-10.59	-9.02
SENORES	495.90	-44.60	-8.25

Source: NSE

Currency Spot Rates

As on 1:30 PM at 16/05/2025

Currency	Unit	Value
USD	\$ 1	₹ 85.5665
YEN	¥ 100	₹ 58.9000
GBP	£ 1	₹ 114.0299
EURO	€ 1	₹ 95.9554

Source: NSE

Commodity Spot Rates

As on 4:30 PM at 16/05/2025

Currency	Unit	Value
Brent Crude	1 Barrel	₹5,274
Gold	10 Gram	₹93,473
Silver	1 Kg	₹95,430
Copper	1 Kg	₹862

Source: NSE

THIS REPORT IS PREPARED AND COMPLIED BY:

Investmentor Securities Team
Research Analyst Reg No : INH000010742
Email: rupam@investmentor.in

[CLICK HERE](#) for RESEARCH DISCLAIMER