



Pivot Table					
	S2	S1	Pivot	R1	R2
Nifty	22,505.33	22,669.67	22,763.33	22,927.67	23,021.33
Bank Nifty	48,343.33	48,828.67	49,114.33	49,599.67	49,885.33

Source: NSE, ISL Research

Indian Market

	Close	% Change
NIFTY	22,834.30	1.45%
BANK NIFTY	49,314.50	1.99%
FINNIFTY	23,969.70	1.87%
SENSEX	75,301.26	1.53%
VIX	13.21	-1.53%

Source: NSE

Sector Index

	Close	% Change
NIFTY MEDIA	1,480.15	3.62%
NIFTY REALTY	822.30	3.16%
CONSUMER DU	35,573.45	2.62%
NIFTY AUTO	21,234.95	2.38%
NIFTY PSU BANK	5,902.65	2.29%
NIFTY METAL	9,033.45	2.13%

Source: NSE

Institutional Activity Yesterday

Category	Buy Value	Sell Value	Net Value
DII	12,726.10	6,725.50	6,000.60
FII/FPI	11,262.99	15,751.44	-4,488.45

Source: NSE

[Market turnover]

Products	Value (Rs. In Crores)
Equities	88,905
Index Futures	33,334
Stock Futures	80,179
Index Options	35,667
Stock Options	5,507

Created with Datawrapper

Market Overview

- Today, we witnessed strong buying across all sectors, and the Nifty closed at the day's high of 22,834, marking an almost 1.5% gain.
- India VIX ended lower by 1.53% losing 0.20 points to close at 13.21;**
- Advance-Decline Ratio on NSE ended at 3.54 indicating more number of companies Advanced as against declined .
- Total Equities traded value Increased to Rs. 88,905.81* vs. Rs. 75,098.46 Crores in the previous trading session.
- Derivative to Cash Ratio stood at 1.73*** indicating a higher amount of trades taken in derivatives (including Options and Futures) as against the cash market.

Source: NSE, BSE, RBI *Provisional Data

Market Outlook

- Nifty gave a strong move after a good consolidation and closed at the day's high. The trend remains bullish as long as it stays above 22,500.
- Bank Nifty surged 700 points after breaking the 44,800 level, as we discussed in yesterday's report. The momentum may continue.
- Gabriel India gave a fresh all-time high breakout, and the momentum may continue from here.
- Sector-wise, Nifty Metal and Nifty Bank are expected to perform well.

Money Market Trends (As of the previous working day)

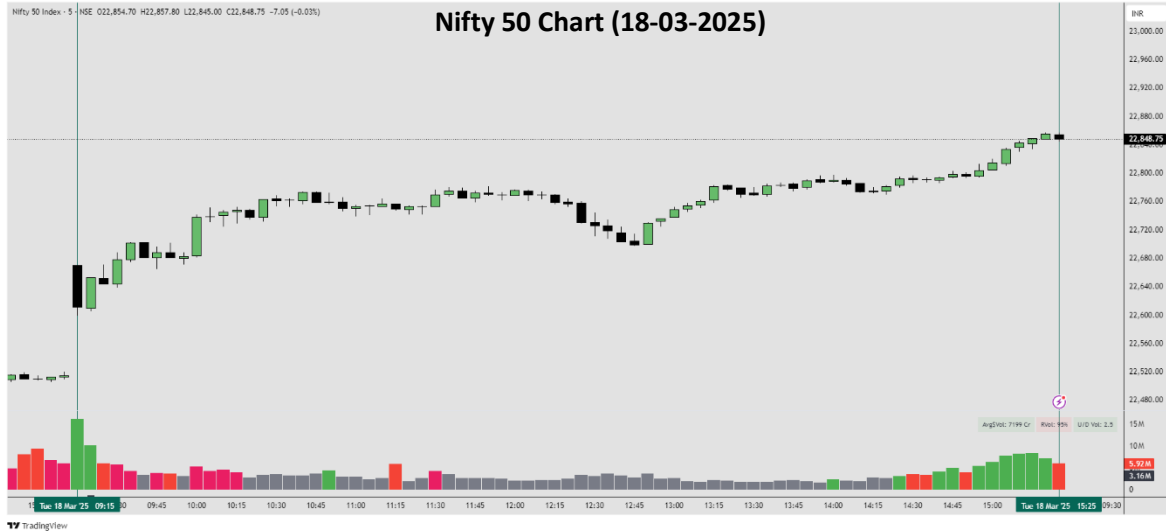
UNDERLYING	YIELD
6.79% GS 2034 (10-Year Government Securities)	6.6891%
7.04% GS 2029 (5-Year Government Securities)	6.6028%
91-day T-Bills	6.4900%
182-day T-Bills	6.6103%
364-day T-Bills	6.5649%



Beaspcapital published on TradingView.com, Mar 18, 2025 16:50 UTC+5:30

Nifty 50 Index - 5 | NSE 022,854.70 H22,857.80 L22,845.00 C22,848.75 -7.05 (-0.03%)

Nifty 50 Chart (18-03-2025)



TV TradingView

TOP GAINERS

SYMBOL	LTP	%DIFF	VOLUME
ICICIBANK	1311.5	3.35	1,56,45,427
LT	3271	3.07	20,29,984
SHRIRAMFIN	641.95	3.00	69,15,463
M&M	2785	2.95	35,22,624
TATAMOTORS	678.8	2.69	1,12,36,084

Source: NSE

TOP LOSERS

SYMBOL	LTP	%DIFF	VOLUME
BAJAJFINSV	1846.5	-1.34	43,42,446
TECHM	1432.9	-0.50	32,80,540
BHARTIARTL	1632	-0.44	65,39,954
-	-	-	-
-	-	-	-

Source: NSE

Currency Spot Rates As on 1.30 PM of 18/03/2025

Currency	Unit	Value
USD	\$1	₹ 86.6705
GBP	£ 1	₹ 112.4475
EURO	€ 1	₹ 94.5523
YEN	¥ 100	₹ 57.8700

Source: RBI

Commodity Spot Rates As on 04.30 PM of 18/03/2025

SYMBOL	Unit	Spot Price
Brent Crude	1 Barrel	₹ 5,865
Gold	10 Gram	₹ 88,030
Silver	1 Kg	₹ 99,850
Copper	1 Kg	₹ 901

Source: NSE

THIS REPORT IS PREPARED AND COMPLIED BY:
BHAUTIK BORKHATARIYA
Research Analyst
Email: bhautik.borkhatariya@gmail.com
[CLICK HERE FOR RESEARCH DISCLAIMER](#)