



## Pivot Table

	S2	S1	Pivot	R1	R2
<b>Nifty</b>	24,828.72	24,887.08	24,975.02	25,033.38	25,121.32
<b>Bank Nifty</b>	55,011.93	55,126.32	55,410.93	55,525.32	55,809.93

Source: NSE , ISL Research

## Indian Market

	Close	%Change
<b>NIFTY</b>	24,945.45	-0.30
<b>BANK NIFTY</b>	55,420.70	0.12
<b>FINNIFTY</b>	26,507.80	0.13
<b>SENSEX</b>	82,059.42	0.33
<b>VIX</b>	0.24	4.86

Source: NSE

## Sector Index

	Close	%Change
<b>NIFTY REALTY</b>	933.20	2.26
<b>NIFTY PSU BANK</b>	6,725.30	1.46
<b>NIFTY PHARMA</b>	21,740.45	0.50
<b>NIFTY IT</b>	37,477.80	-1.30
<b>NIFTY MEDIA</b>	1,671.60	-0.59
<b>NIFTY OIL &amp; GAS</b>	11,553.35	-0.36

Source: NSE

## Previousday Institutional Activity

Category	Buy Value	Sell Value	Net Value
<b>DII</b>	16,971.90	11,784.81	5,187.09
<b>FII / FPI</b>	21,379.92	12,548.87	8,831.05

Source: NSE

## Market Overview

- Profit booking was visible today in small-cap and mid-cap indices. Nifty also faced resistance near the 25,000 level.
- India VIX higher lower by 4.86% gaining points 0.81 to close at 17.36
- Advance-Decline Ratio on NSE ended at 1.71 indicating more number of companies Advanced as against Decline.
- Total Equities traded value decreased to Rs. 1,16,116.49\* vs. Rs. 1,49,817.59\* Crores in the previous trading session.
- Derivative to Cash Ratio stood at 1.36\* indicating a higher amount of trades taken in derivatives (including Options and Futures) as against the cash market.

Source: NSE, BSE, RBI

\*Provisional Data

## Market Outlook

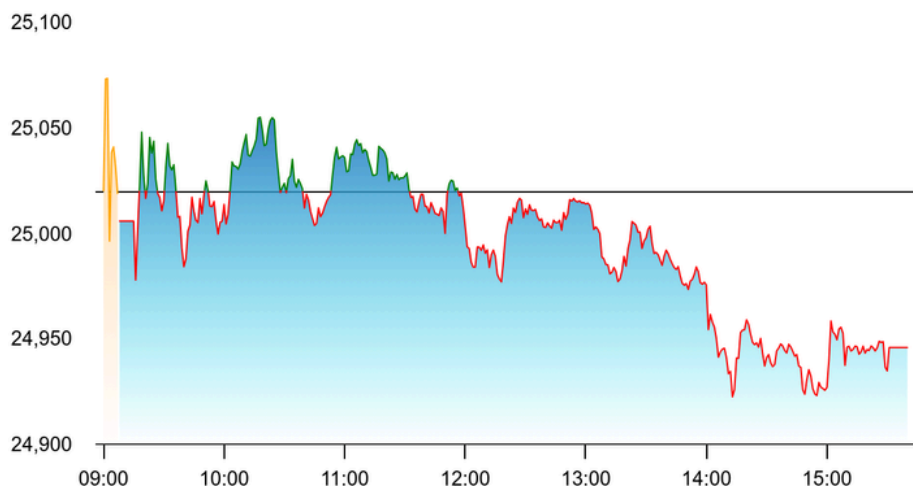
- Profit booking was visible today in small-cap and mid-cap indices. Nifty also faced resistance near the 25,000 level.
- Bank Nifty closed in the green, but profit booking was observed in the second half. Fresh longs are advisable only above 56,000.
- BASF stock gave a good breakout — keep an eye on it.
- Sector-wise, keep a watch on sugar and media stocks for this week.



Date: 19 May 2025

## Market Turnover

Products	Value (Rs.in Cr)
Equities	1,15,728.67
Index Futures	20,037.03
Stock Futures	93,156.97
Index Options	35,838.00
Stock Options	9,311.27



## Top Gainers

SYMBOL	LTP	CHNG	CHNG%
KAYA	342.35	57.05	20.00
BANCOINDIA	494.50	82.40	20.00
ZODIAC	529.70	88.25	19.99
PREMEXPLN	589.90	96.40	19.53
FOODSIN	109.40	15.93	17.04

Source: NSE

## Top Losers

SYMBOL	LTP	CHNG	CHNG%
PROTEAN	1,143.20	-285.70	-19.99
BBL	3,096.30	-360.70	-10.43
MUKANDLTD	108.65	-11.70	-9.72
GLOBAL	60.00	-5.79	-8.80
IDEA	6.75	-0.62	-8.41

Source: NSE

## Currency Spot Rates

As on 1:30 PM at 19/05/2025

Currency	Unit	Value
USD	\$ 1	₹ 85.5665
YEN	¥ 100	₹ 58.9000
GBP	£ 1	₹ 114.0299
EURO	€ 1	₹ 95.9554

Source: NSE

## Commodity Spot Rates

As on 4:30 PM at 19/05/2025

Currency	Unit	Value
Brent Crude	1 Barrel	₹5347
Gold	10 Gram	₹93,530
Silver	1 Kg	₹95,383
Copper	1 Kg	₹856

Source: NSE

THIS REPORT IS PREPARED AND COMPLIED BY:

Investment Securities Team  
Research Analyst Reg No : INH000010742  
Email: rupam@investmentor.in

[CLICK HERE](#) for RESEARCH DISCLAIMER