



Pivot Table					
	S2	S1	Pivot	R1	R2
Nifty	17,703.17	17,773.88	17,889.12	17,959.83	18,075.07
Bank Nifty	40,145.63	40,423.67	40,858.13	41,136.17	41,570.63

Source: NSE, ISL Research

Indian Market

	Close	% Change
NIFTY	17,844.60	-0.56%
BANK NIFTY	40,701.70	-1.05%
FINNIFTY	18,252.55	-0.98%
SENSEX	60,691.54	-0.51%
VIX	13.38	2.22%

Source: NSE

Sector Index

INDEX	Close	% Change
NIFTY IT	31,222.35	0.54%
NIFTY AUTO	13,177.40	0.28%
NIFTY OIL & GAS	7,149.15	-1.14%
NIFTY PSU BANK	3,768.55	-1.11%
NIFTY PHARMA	12,055.40	-0.81%
NIFTY METAL	5,762.95	-0.77%

Source: NSE

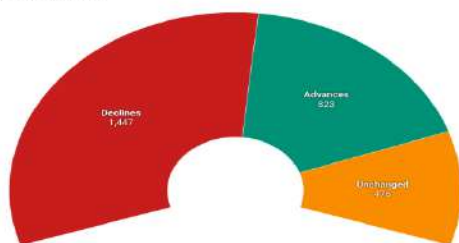
Institutional Activity

Category	Buy Value	Sell Value	Net Value
DII	4,980.30	4,894.07	86.23
FII	4,256.62	4,415.57	-158.95

Source: NSE

Advances/Declines/Unchanged

Total - 2746 Companies



Source: BSE | Created with Datawrapper

Market Overview

- Nifty50 breached below 17,850 levels in today's session. Broader indices including Nifty Midcap100 and Nifty Smallcap100 ended flat by 0.08% and -0.34% respectively.
- India VIX rose by 2.22% by 0.30 points to close at 13.38;
- Advance-Decline Ratio on NSE ended at 0.57 indicating more number of companies advanced as against declining. Overall out of 2746 Nifty companies **823 - Advances, 1447 - Declines and 476 - Unchanged.**
- Sectorally, Oil & Gas shredded its previous gains after falling more than 1% along with banking sector. We saw respite in IT index in underperforming markets.
- Total traded value drops to Rs. 39,494.09 crore in cash equities. This shows cash volumes are drying up and more positions are added into stock futures.
- Derivative to Cash Ratio stood at 5.78 indicating higher amount of trades taken in derivatives (including Options and Futures) as against cash market.

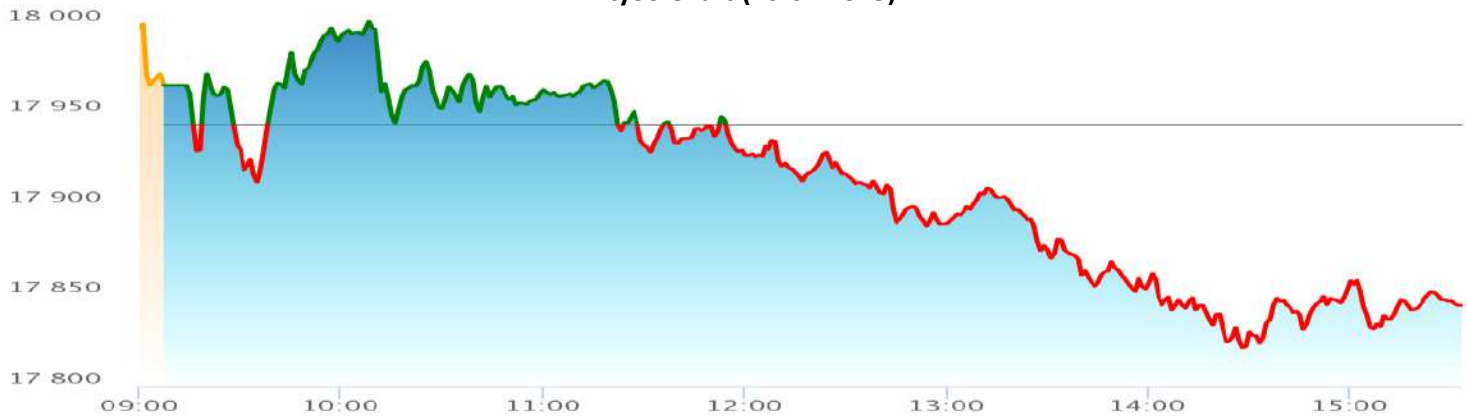
Source: NSE, BSE, RBI

Market Outlook

- Nifty fell below 17,850 levels and we could see market fall further in tomorrow session.
- US Markets are closed on 20th Feb on account of President' Day.
- Datamatics Global Service could be stock to watch for tomorrow.
- NMDC Steel got listed on exchanges today. We may see further upmove.

Money Market Trends (As on previous working day)

UNDERLYING	YIELD
7.26% GS 2033 (10-Year Government Securities)	7.3171%
7.38% GS 2027 (5-Year Government Securities)	7.2908%
91 day T-Bills	6.7292%
182 day T-Bills	7.1232%
364 day T-Bills	7.1594%


Nifty50 Chart (20-02-2023)


TOP GAINERS

SYMBOL	LTP	%CH AN	VOLUME
DIVISLAB	2902	2.55	7,40,945
ULTRACEMCO	7416.0	1.62	7,13,498
TECHM	1145	1.40	45,90,531
POWERGRID	216.15	1.10	51,31,438
HINDALCO	433.5	0.93	37,49,802

Source: NSE

TOP LOSERS

SYMBOL	LTP	%CHA NGF	VOLUME
ADANIENT	1613	-6.37	67,62,330
CIPLA	963	-6.12	58,29,572
BRITANNIA	4447	-1.90	3,08,681
BPCL	326.05	-1.70	17,73,126
UPL	757.9	-1.59	11,49,759

Source: NSE

Currency Spot Rates As on 1.30 PM of 20/02/2023

Currency	Unit	Value
USD	\$1	₹ 82.6902
GBP	£ 1	₹ 99.5739
EURO	€ 1	₹ 88.4102
YEN	¥ 100	₹ 61.6700

Source: RBI

Commodity Spot Rates As on 04.30 PM of 20/02/2023

SYMBOL	Unit	Spot Price
Brent Crude	1 Barrel	₹ 6,222
Gold	10 Gram	₹ 56,389
Silver	1 Kg	₹ 65,670
Cooper	1 Kg	₹ 777

Source: NSE

THIS REPORT IS PREPARED AND COMPLIED BY:

JAY PATEL

Senior Research Analyst

Email: jaypatel@investmentoronline.com[CLICK HERE FOR RESEARCH DISCLAIMER](#)