



Pivot Table

	S2	S1	Pivot	R1	R2
Nifty	23,024.67	23,187.33	23,294.67	23,457.33	23,564.67
Bank Nifty	49,604.33	50,098.67	50,385.33	50,879.67	51,166.33

Source: NSE , ISL Research

Indian Market

	Close	%Change
NIFTY	23,350.40	0.69%
BANK NIFTY	50,593.55	1.06%
FINNIFTY	24,567.95	1.07%
SENSEX	76,905.51	0.73%
VIX	12.58	-0.22%

Source: NSE

Sector Index

	Close	%Change
NIFTY MEDIA	1,547.70	2.20%
NIFTY OIL & GAS	10,544.20	1.84%
NIFTY PSU BANK	6,130.95	1.42%
NIFTY PHARMA	21,625.90	1.34%
NIFTY CONSUMER	36,250.40	-0.77%
NIFTY METAL	9,203.55	-0.55%

Source: NSE

Institutional Activity Yesterday

Category	Buy Value	Sell Value	Net Value
DII	11,784.06	14,920.08	-3,136.02
FII / FPI	16,328.06	13,088.92	3,239.14

Source: NSE

Market Overview

- As we saw a non-stop rally in Nifty from Monday to Friday, a slight pullback is expected in the upcoming week after such a strong rally.
- India VIX ended Lower by 0.22% Losing 0.028 points to close at 12.58;
- Advance-Decline Ratio on NSE ended at 2.63 indicating more number of companies Advanced as against declined.
- Total Equities traded value Increased to Rs. 1,59,508.26* vs. Rs. 1,03,880.91 Crores in the previous trading session.
- Derivative to Cash Ratio stood at 1.52* indicating a higher amount of trades taken in derivatives (including Options and Futures) as against the cash market.

Source: NSE, BSE, RBI

*Provisional Data

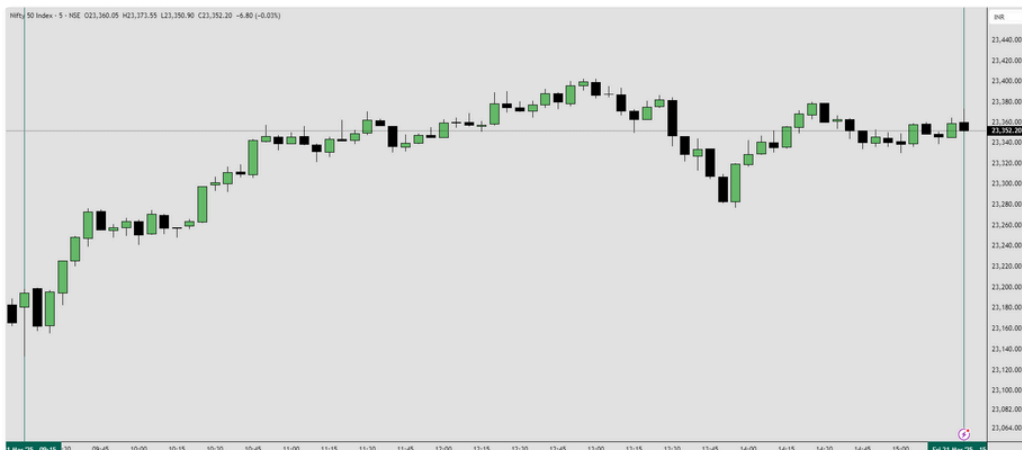
Market Outlook

- Nifty gave a breakout on the weekly timeframe and is now above 23,300. However, after gaining 1,000 points last week, it needs consolidation or a retracement for the upcoming move.
- Bank Nifty also looks strong, but Nifty is at a resistance level. It's important to wait for Monday's closing for a clear directional view.
- **Tilaknagar Industries:** Today's low can be considered as a stop-loss, with potential for a good upside move.
- Next week, focus on the metal sector, as we might see a strong move.



Market Turnover

Products	Value (Rs.in Cr)
Equities	1,59,508.26
Index Futures	32,790.37
Stock Futures	1,56,681.28
Index Options	46,297.67
Stock Options	8,237.41



Top Gainers

SYMBOL	LTP	%DIFF	VOLUME
SBILIFE	1549.75	3.43	19,77,397
NTPC	353	3.29	3,64,06,837
ONGC	242	2.72	2,92,85,333
BAJFINANCE	8911.1	2.67	27,44,801
BPCL	279.11	2.56	2,61,73,451

Source: NSE

Top Losers

SYMBOL	LTP	%DIFF	VOLUME
TRENT	5138	-1.60	11,97,537
M&M	2787.2	-1.45	38,24,316
WIPRO	264.3	-1.38	2,26,59,168
HINDALCO	697	-1.27	75,95,841
INFY	1595.4	-1.25	1,00,74,677

Source: NSE

Currency Spot Rates

As on 1:30 PM at 21/03/2025

Currency	Unit	Value
USD	\$ 1	₹ 86.2184
GBP	£ 1	₹ 111.4557
EURO	€ 1	₹ 93.3452
YEN	¥ 100	₹ 57.6600

Source: NSE

Commodity Spot Rates

As on 4:30 PM at 21/03/2025

Currency	Unit	Value
Brent Crude	1 Barrel	₹ 5,875
Gold	10 Gram	₹ 88,110
Silver	1 Kg	₹ 97,607
Copper	1 Kg	₹ 896

Source: NSE

THIS REPORT IS PREPARED AND COMPLIED BY:

Investmentor Securities Team
Research Analyst Reg No : INH000010742
Email: rupam@investmentor.in

[CLICK HERE](#) for RESEARCH DISCLAIMER