



## Pivot Table

	S2	S1	Pivot	R1	R2
<b>Nifty</b>	<b>18,010.13</b>	<b>18,064.22</b>	18,132.73	18,186.82	18,255.33
<b>Bank Nifty</b>	<b>42,346.08</b>	<b>42,539.77</b>	42,809.33	43,003.02	43,272.58

Source: NSE, ISL Research

## Indian Market

	Close	% Change
<b>NIFTY</b>	<b>18,118.30</b>	<b>0.00%</b>
<b>BANK NIFTY</b>	<b>42,733.45</b>	<b>-0.21%</b>
<b>FINNIFTY</b>	18,890.00	0.01%
<b>SENSEX</b>	60,978.75	0.06%
<b>VIX</b>	13.65	0.22%

Source: NSE

## Sector Index

INDEX	Close	% Change
<b>NIFTY AUTO</b>	12,960.85	1.28%
<b>NIFTY FMCG</b>	44,324.35	0.14%
<b>NIFTY IT</b>	30,316.90	0.77%
<b>NIFTY METAL</b>	6,717.60	-0.89%
<b>NIFTY PHARMA</b>	12,593.85	-0.98%
<b>NIFTY MEDIA</b>	1,898.75	0.41%

Source: NSE

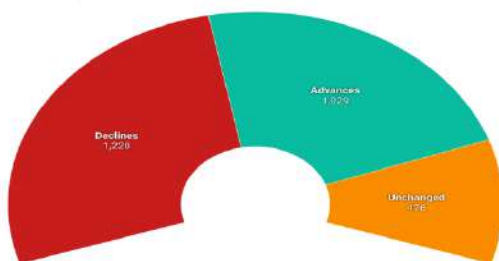
## Institutional Activity

Category	Buy Value	Sell Value	Net Value
<b>DII</b>	6,849.63	5,704.88	1,144.75
<b>FII</b>	6,403.88	7,164.39	-760.51

Source: NSE

## Advances/Declines/Unchanged

Total - 2696 Companies



Source: NSE | Created with Datawrapper

## Market Overview

- Nifty50 indices closed flat amid upcoming budget mixed reaction. Broader indices including Nifty Midcap100 and Nifty Smallcap100 ended lower by -0.39% and -0.37% respectively.
- India VIX ended up higher by 0.22% by 0.03 points to close at 13.65;**
- Advance-Decline Ratio** on NSE ended at **0.66** indicating more number of companies declined as against advancing. Overall out of 2733 Nifty companies **874-Advanced, 1330-Declined and 493-Remain Unchanged.**
- Sectorally, Nifty Auto outperformed other indices gaining 1.28% on intraday basis amid earning results next week. Today, PSU Bank, Healthcare and Realty sector contributed to intraday losses.
- Maruti Suzuki Q3 net profit zooms 130% to Rs. 2391 crore, while revenue up by 25%.
- European Market opened on a lower side along with its global peers.
- Derivative to Cash Ratio stood at 5.15** indicating higher amount of trades taken in derivatives (including Options and Futures) as against cash market.

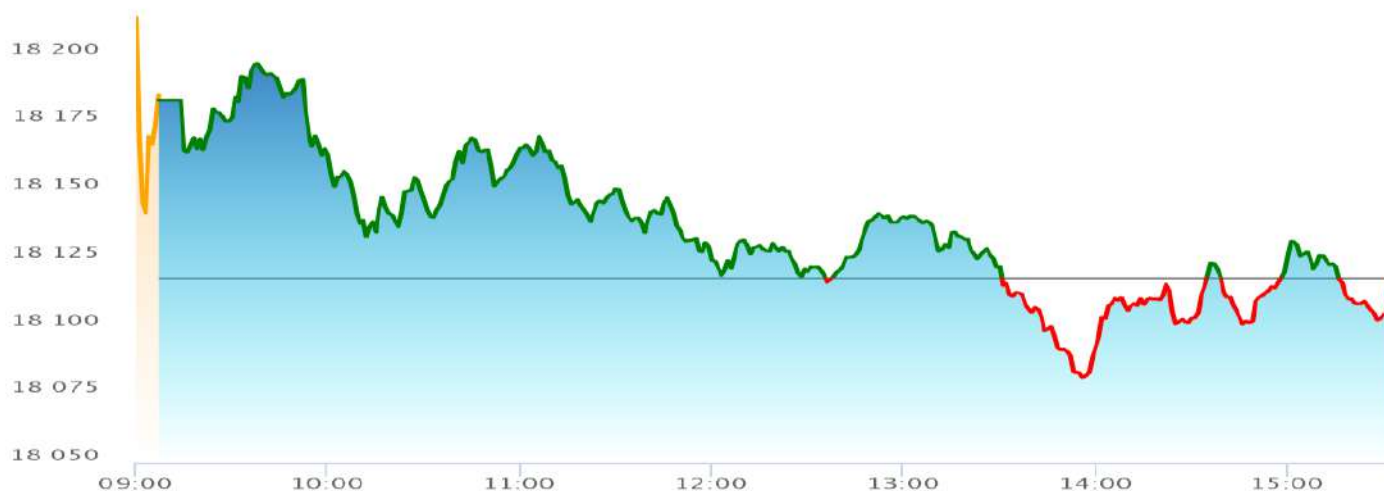
Source: NSE, BSE, RBI

## Market Outlook

- Nifty's trading range is between 18000-18200 levels. Any breakout from either side would decide next leg for Nifty.
- In today's session, 18,100 acted as strong support; Market will open on negative side in tomorrow's session. Also Breakout below 18,100 would see significant downside.

## Money Market Trends (As on previous working day)

UNDERLYING	YIELD
7.26% GS 2032 (10-Year Government Securities)	<b>7.3515%</b>
7.38% GS 2027 (5-Year Government Securities)	<b>7.1570%</b>
91 day T-Bills	<b>6.4238%</b>
182 day T-Bills	<b>6.8204%</b>
364 day T-Bills	<b>6.9099%</b>


**Nifty50 Chart (24-01-2023)**

**TOP GAINERS**

SYMBOL	LTP	%CHA NGE	VOLUME
TATAMOTORS	422.0	3.33	3,01,97,475
MARUTI	8,696.	3.31	10,39,571
BAJAJ-AUTO	3,684.	1.67	2,12,778
BRITANNIA	4,405.	1.55	1,35,586
HCLTECH	1,136.	1.35	48,61,107

Source: NSE

**TOP LOSERS**

SYMBOL	LTP	%CH AN	VOLUME
AXISBANK	910.30	-2.40	1,85,27,897
HINDALCO	484.05	-2.05	32,93,586
DRREDDY	4,248.8	-2.05	2,64,054
POWERGRID	220.90	-1.87	46,13,170
SBILIFE	1,272.6	-1.76	6,57,428

Source: NSE

**Currency Spot Rates** As on 1.30 PM of 24/01/2023

Currency	Unit	Value
USD	\$1	₹ 81.6020
GBP	£ 1	₹ 101.0951
EURO	€ 1	₹ 88.7841
YEN	¥ 100	₹ 62.7100

Source: RBI

**Commodity Spot Rates** As on 12.30 PM of 24/01/2023

SYMBOL	Unit	Spot Price
Brent Crude	1 Barrel	₹ 6,644
Gold	10 Gram	₹ 57,058
Silver	1 Kg	₹ 67,838
Cooper	1 Kg	₹ 789

Source: NSE

THIS REPORT IS PREPARED AND COMPLIED BY:

**JAY PATEL**  
 Senior Research Analyst  
 Email: [jaypatel@investmentoronline.com](mailto:jaypatel@investmentoronline.com)



**InvestMentor**  
*Invest Today For Your Tomorrow*

# Evening Coffee With Markets



[CLICK HERE FOR RESEARCH DISCLAIMER](#)