



## Pivot Table

	S2	S1	Pivot	R1	R2
<b>Nifty</b>	24,495.83	24,588.37	24,739.13	24,831.67	24,982.43
<b>Bank Nifty</b>	55,639.30	55,862.10	56,220.25	56,443.05	56,801.20

Source: NSE, ISL Research

## Indian Market

	Close	%Change
<b>NIFTY</b>	24,680.90	-0.63
<b>BANK NIFTY</b>	56,084.90	-0.79
<b>FINNIFTY</b>	26,615.20	-0.72
<b>SENSEX</b>	80,891.02	0.70
<b>VIX</b>	12.06	6.98

Source: NSE

## Sector Index

	Close	%Change
<b>NIFTY PHARMA</b>	22,761.15	0.43
<b>NIFTY FMCG</b>	54,732.95	0.28
<b>NIFTY HEALTHCARE</b>	14,860.10	0.09
<b>NIFTY REALTY</b>	911.90	-4.07
<b>NIFTY MEDIA</b>	1,624.50	-2.70
<b>NIFTY PRIVATE BANK</b>	27,148.25	-1.65

Source: NSE

## Previous day Institutional Activity

Category	Buy Value	Sell Value	Net Value
<b>DII</b>	12,306.56	10,503.10	1,803.46
<b>FII / FPI</b>	11,444.67	14,443.62	-2,998.95

Source: NSE

## Market Overview

- Nifty 50 is under pressure for continues 3 days and today it went down for about 156 point (0.63%) and break its important support of 24,750 and trade below this level. Now next support lies at 24,500.
- India VIX higher by 6.98% gaining points 0.79 to close at 12.06
- Advance-Dcline Ratio on NSE ended at 0.36 indicating more number of companies Decline as against Advanced.
- Total Equities traded value decreased to Rs.92,169.65\* vs. Rs1,00,060.37\* Crores in the previous trading session.
- Derivative to Cash Ratio stood at 4.04\* indicating a higher amount of trades taken in derivative market (including Option and Future) as against cash market.

Source: NSE, BSE, RBI \*Provisional Data

## Market Outlook

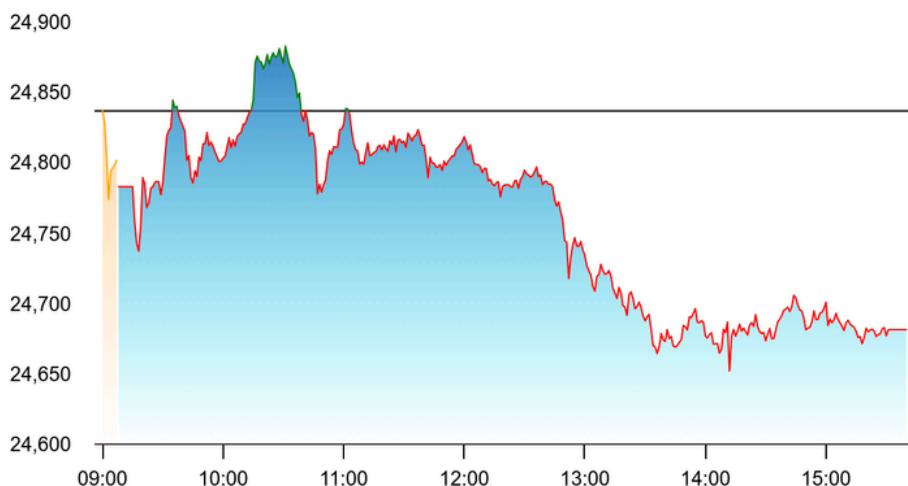
- Nifty 50 is under pressure for continues 3 days and today it went down for about 156 point (0.63%) and break its important support of 24,750 and trade below this level. Now next support lies at 24,500.
- Bank Nifty also break its support of 56,650 and trade below this level, now next support lies at 55,862 and 55,639. on the other side resistance faced at 56,440.
- The chart of JAGSONPAL PHARMACEUTICALS LTD looks good. If it sustain above 296 a good move is expected. keep an eyes on it.
- Sector- wise, Nifty pharma and its stock preformed very well today.



Date: 28 July 2025

## Market Turnover

Products	Value (Rs.in Cr)
Equities	91,819.87
Index Futures	32,147.32
Stock Futures	2,92,881.97
Index Options	41,779.28
Stock Options	6,252.79



## Top Gainers

SYMBOL	LTP	CHNG	CHNG%
VIMTALABS	680.00	95.05	16.25
TIMESGTY	242.00	21.12	9.56
ACMESOLAR	296.00	25.55	9.45
JAGSNPHARM	287.80	24.51	9.31
OMAXAUTO	132.00	10.87	8.97

Source: NSE

## Top Losers

SYMBOL	LTP	CHNG	CHNG%
VALIANT-RE	11.55	-7.69	-39.97
KELLTONTEC	27.20	-4.95	-15.40
20MICRONS	239.99	-28.57	-10.64
AVG	242.15	-28.45	-10.51
PARAS	704.70	-78.30	-10.00

Source: NSE

## Currency Spot Rates

As on 1:30 PM at 28/07/2025

Currency	Unit	Value
USD	\$ 1	₹ 86.5510
YEN	¥ 100	₹ 58.4200
GBP	£ 1	₹ 116.0718
EURO	€ 1	₹ 101.4083

Source: NSE

## Commodity Spot Rates

As on 4:30 PM at 28/07/2025

Currency	Unit	Value
Brent Crude	1 Barrel	₹5,700
Gold	10 Gram	₹98,038
Silver	1 Kg	₹1,13,080
Copper	1 Kg	₹894

Source: NSE

THIS REPORT IS PREPARED AND COMPLIED BY:

Investmentor Securities Team  
Research Analyst Reg No : INH000010742  
Email: rupam@investmentor.in

[CLICK HERE](#) for RESEARCH DISCLAIMER